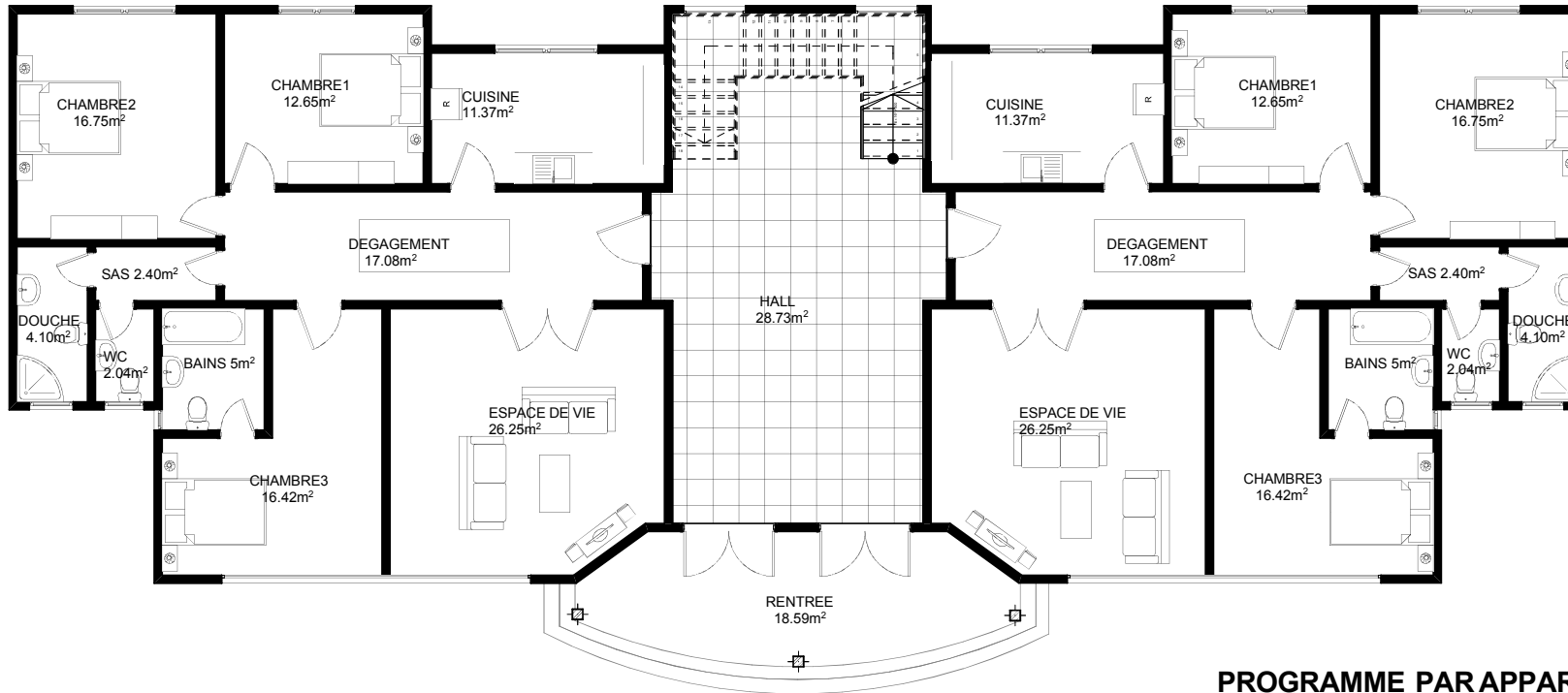


Jasmin



VUE EN PLAN DU REZ DE CHAUSSEE

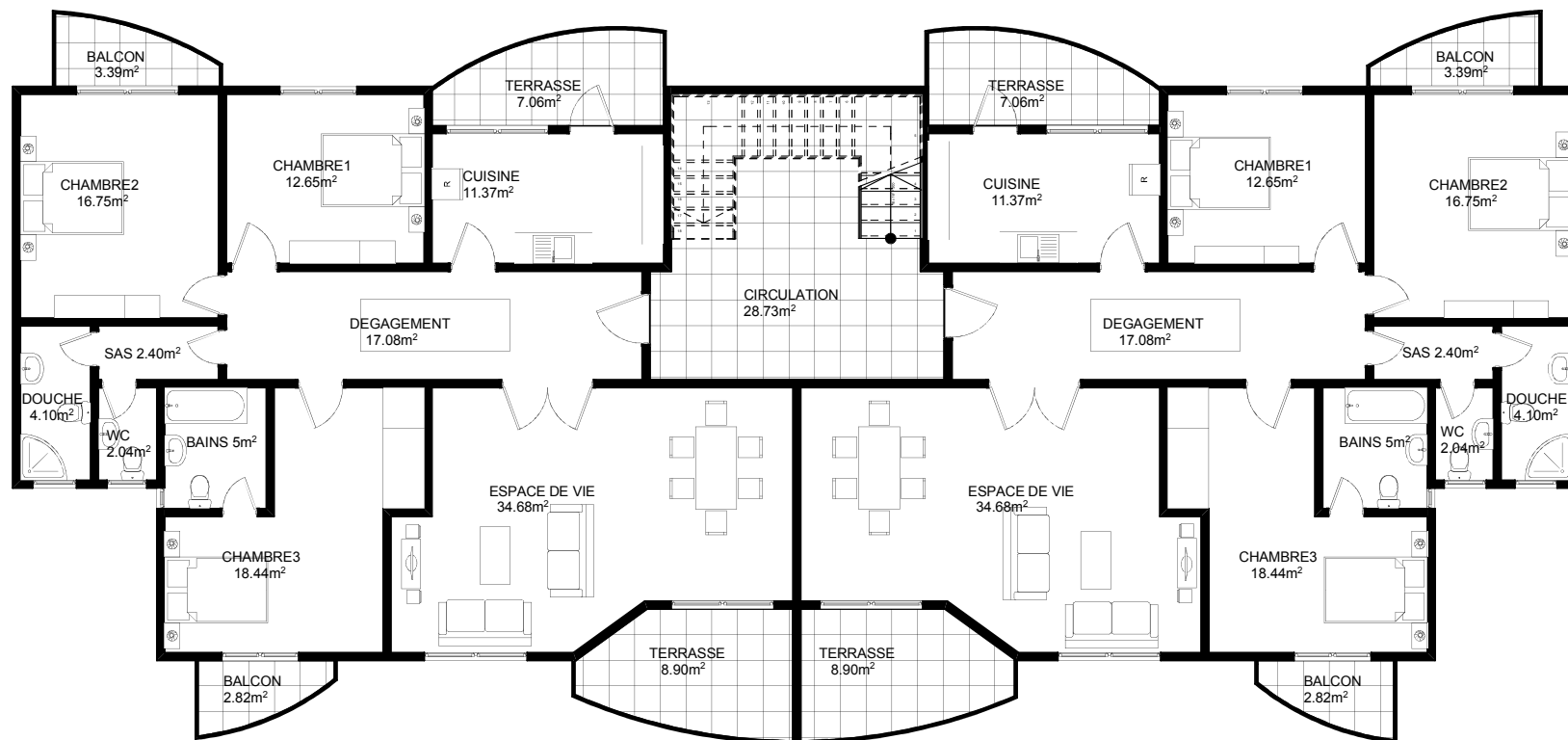
1.RENTREE: 18.59m²
2.HALL: 28.73m²

PROGRAMME PAR APPARTEMENT: (modulaire)

3.CHAMBRE1: 12.65m²
4.CHAMBRE2: 16.75m²
5.CHAMBRE3: 16.42m²
6.DEGAGEMENT: 17.08m²
7.ESPACE DE VIE: 26.25m²
8.CUISINE: 11.37m²
9.BAINS: 5m²
10.DOUCHE: 4.10m²
11.WC: 2.04m²
12.SAS: 2.40m²

SURFACE TOTALE/APPART: 114.06m²

Jasmin



VUE EN PLAN ETAGE COURANT

PROGRAMME PAR APPARTEMENT:

- 1.CHAMBRE1: 12.65m²
- 2.CHAMBRE2: 16.75m²
- 3.CHAMBRE3: 18.44m²
- 4.DEGAGEMENT: 17.08m²
- 5.ESPACE DE VIE: 34.68m²
- 6.CUISINE: 11.37m²
- 7.BAINS: 5m²
- 8.DOUCHE: 4.10m²
- 9.WC: 2.04m²
- 10.SAS: 2.40m²

- 11.TERRASSE: 8.90m²
- 12.BALCON: 2.82m²
- 13.TERRASSE: 7.06m²
- 14.BALCON: 3.39m²

SURFACE TOTALE: 146.68m²

SINCERYCOM sarl